

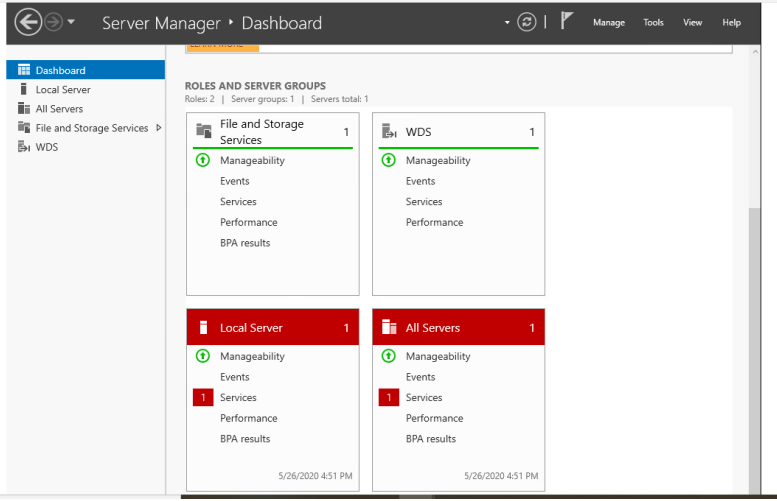
42/42

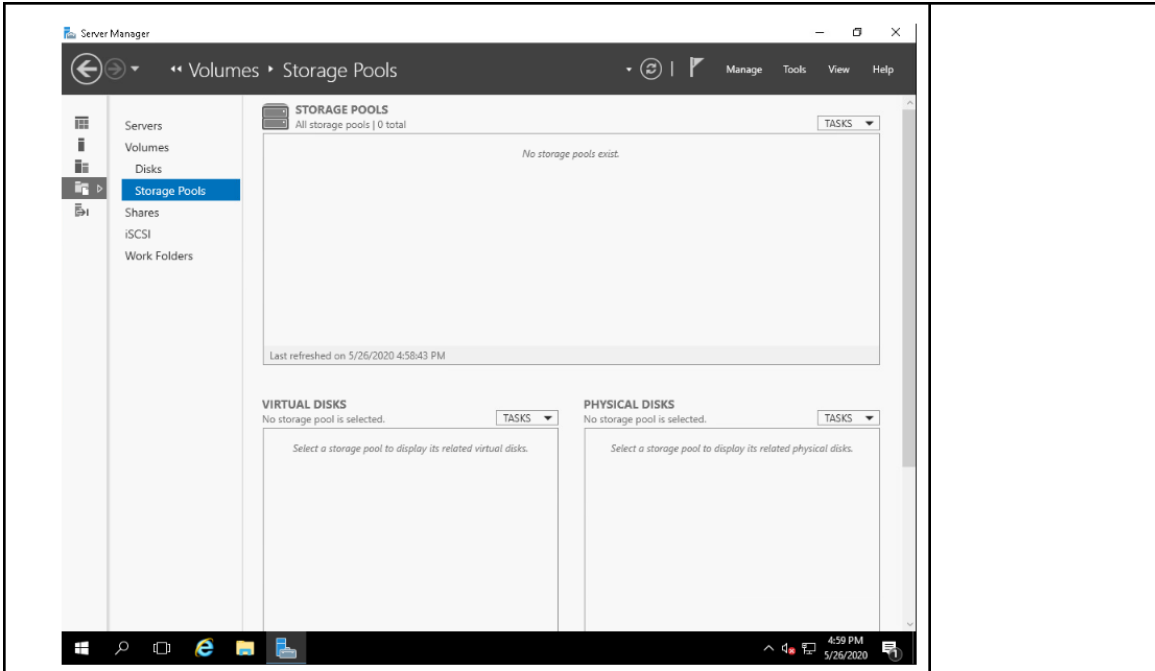
Sweet job

CET 753
Lab Completion Sheet
Chapter 3

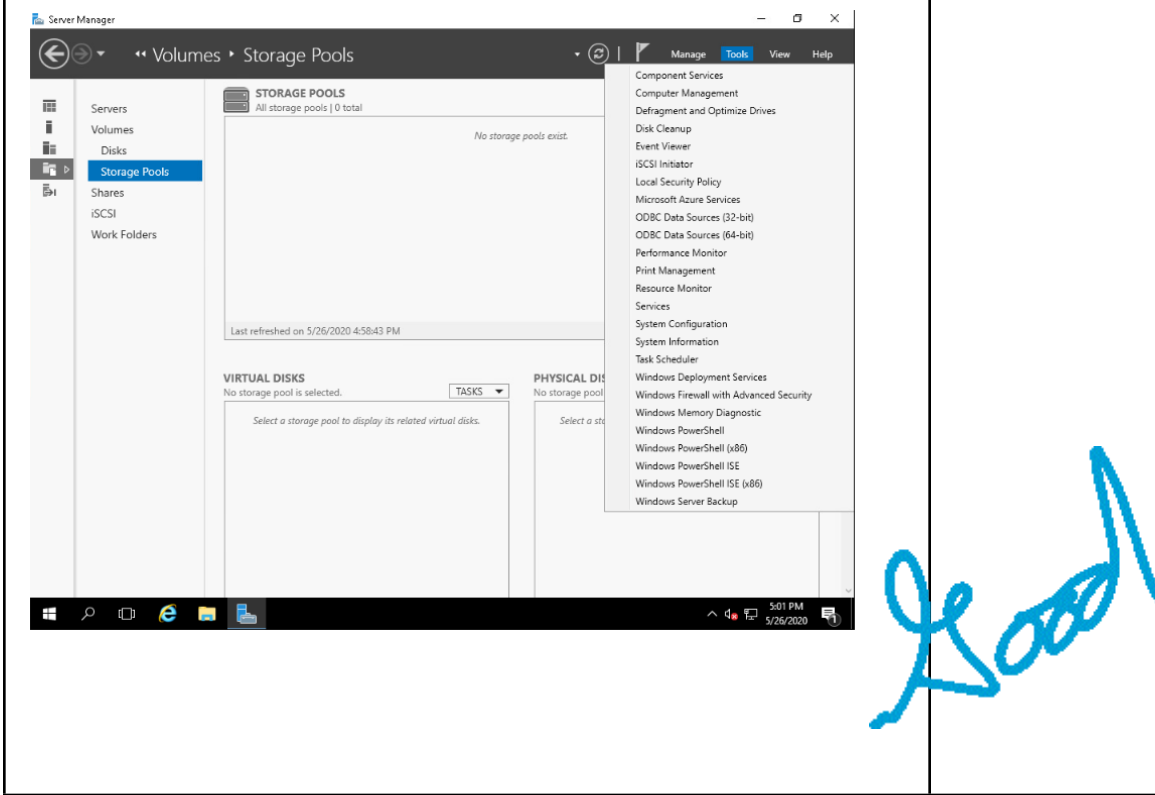
DID YOU DO A SNAP SHOT BEFORE STARTING THIS CHAPTER?

#	Page	Chapter/Activity	Status	Description
1				
5	105	3-1		Getting to Know Server Manager

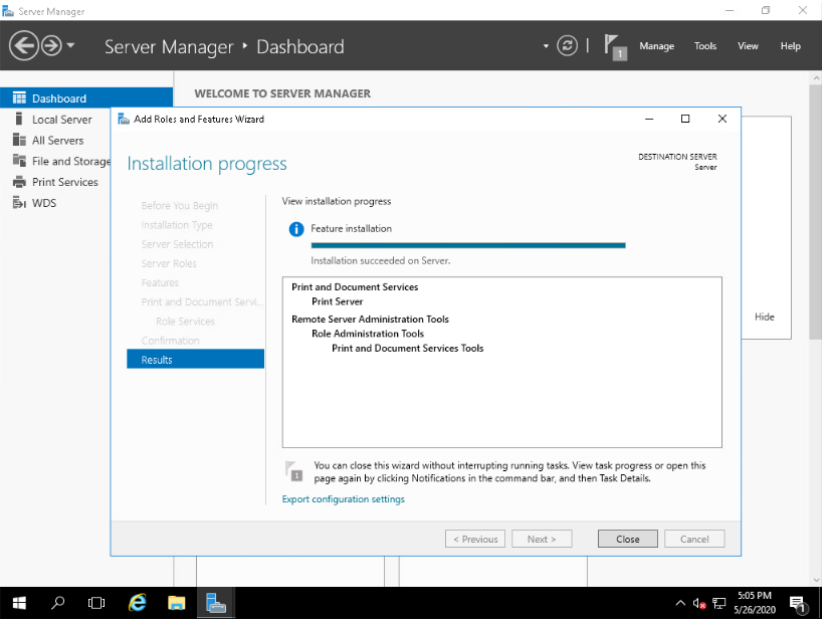
Screen Shot(s)	Documentation
<p>Take a screen shot after instruction # 3</p> 	<p>The names of the boxes are: File and Storage Services WDS Local Server All Servers</p> <p>Two are in Red: Local Server and All Servers</p>
	<p>List the roles in Documentation that you found doing instruction # 6 Servers Events Services Best Practices Analyzer Performance Roles and Features</p>
Take a screen shot after instruction # 9	

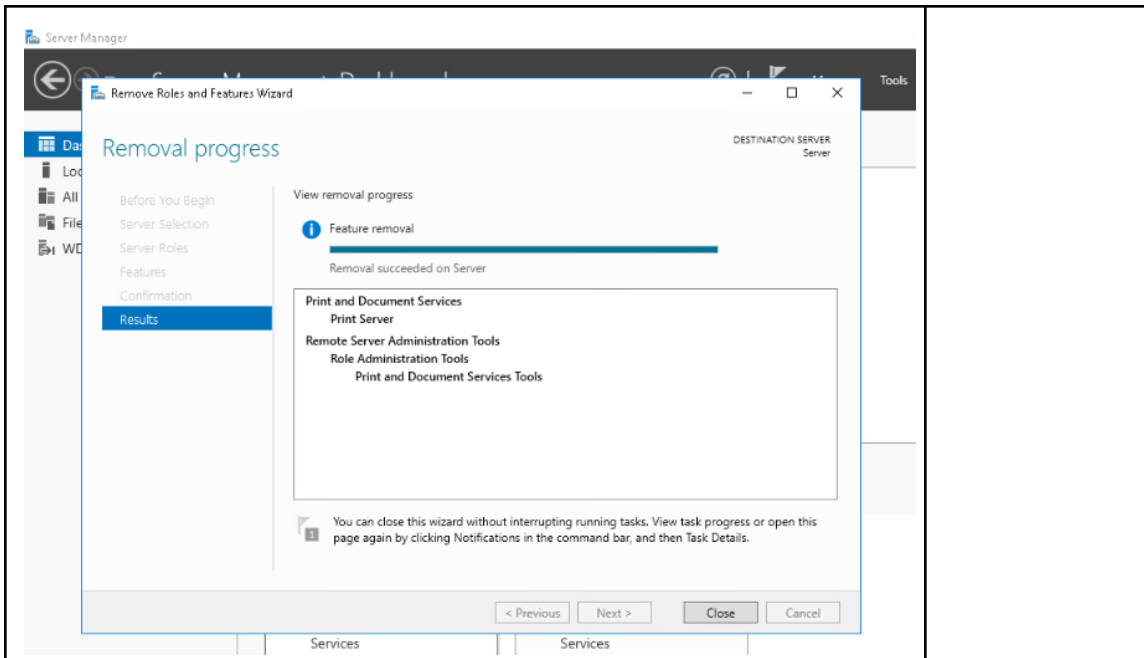


Take a screen shot after instruction # 13



#	Page	Chapter/Activity	Status	Description
16	108	3-2		Installing and Removing a Server Role

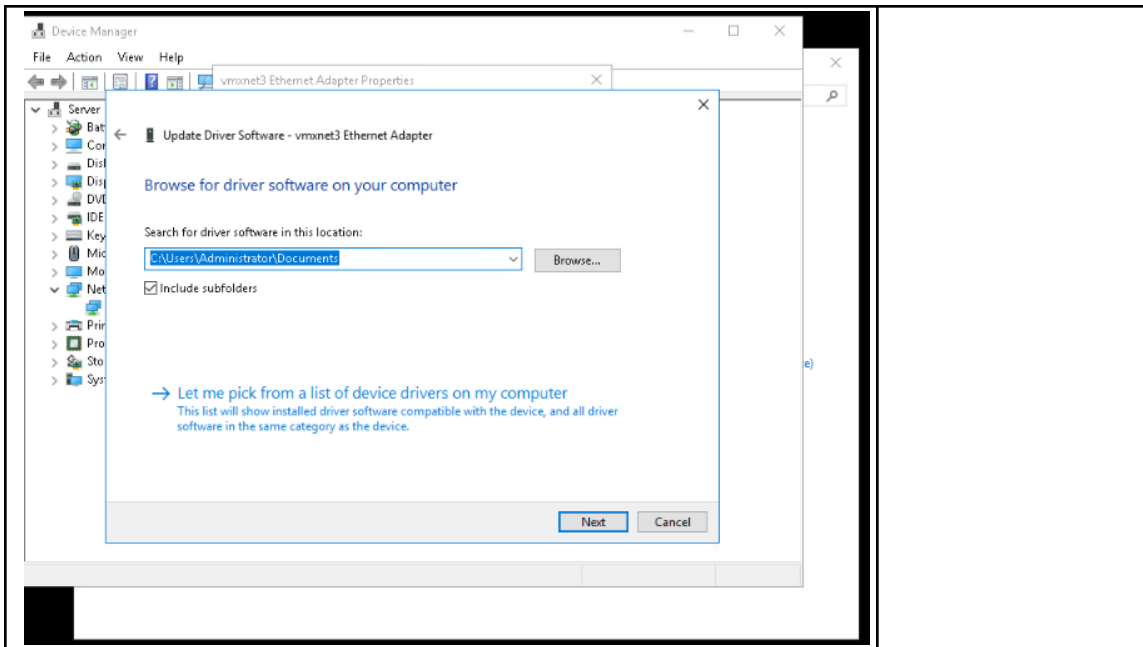
Screen Shot(s)	Documentation
<p>Take a screen shot after instruction # 14 and before selecting Close</p> 	
<p style="text-align: center;"><i>Yes</i></p>	<p>Answer question 15 in this area In the Roles and Features box I see: 1. Print and Document Services 2. Print Server</p>
<p>Take a screen shot after instruction # 23 and before selecting Close</p>	



#	Page	Chapter/Activity	Status	Description
1				
7	115	3-3		Resolving a Resource Conflict

Screen Shot(s)	Documentation
	<p>Answer question 6 in this area The IRQ Lines used are -37 to -45 and there are no conflicts. If there were a conflict you could read the conflicting device in the conflicting device list that it would match up with.</p>
<p>Take a screen shot after instruction 9 before selecting Cancel</p>	

awesome



#	Page	Chapter/Activity	Status	Description
1	8	117 3-4		Manually Running the System File Checker

This activity will take several minutes to complete the check.

Screen Shot(s)	Documentation
<p>Take a screen shot after instruction # 2</p>	<p>No need to answer the question after # 2</p>
<p>Take a screen shot after instruction # 5</p>	

```

Administrator: Command Prompt
[/OFFWINDIR=<offline windows directory> /OFFBOOTDIR=<offline boot directory>]

/SCANNOW      Scans integrity of all protected system files and repairs files with
              problems when possible.
/VERIFYONLY   Scans integrity of all protected system files. No repair operation is
              performed.
/SCANFILE     Scans integrity of the referenced file, repairs file if problems are
              identified. Specify full path <file>
/VERIFYFILE   Verifies the integrity of the file with full path <file>. No repair
              operation is performed.
/OFFBOOTDIR   For offline repair specify the location of the offline boot directory
/OFFWINDIR    For offline repair specify the location of the offline windows directory

e.g.

sfc /SCANNOW
sfc /VERIFYFILE=c:\windows\system32\kernel32.dll
sfc /SCANFILE=d:\windows\system32\kernel32.dll /OFFBOOTDIR=d:\ /OFFWINDIR=d:\windows
sfc /VERIFYONLY

C:\Users\Administrator>sfc /scannow

Beginning system scan. This process will take some time.

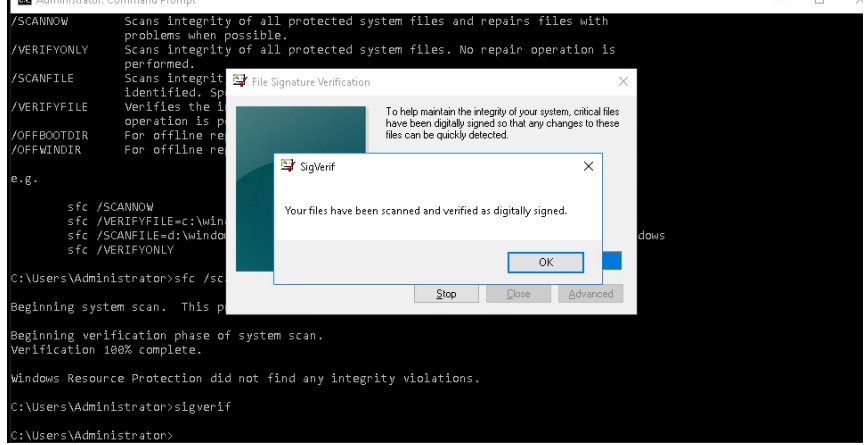
Beginning verification phase of system scan.
Verification 100% complete.

Windows Resource Protection did not find any integrity violations.

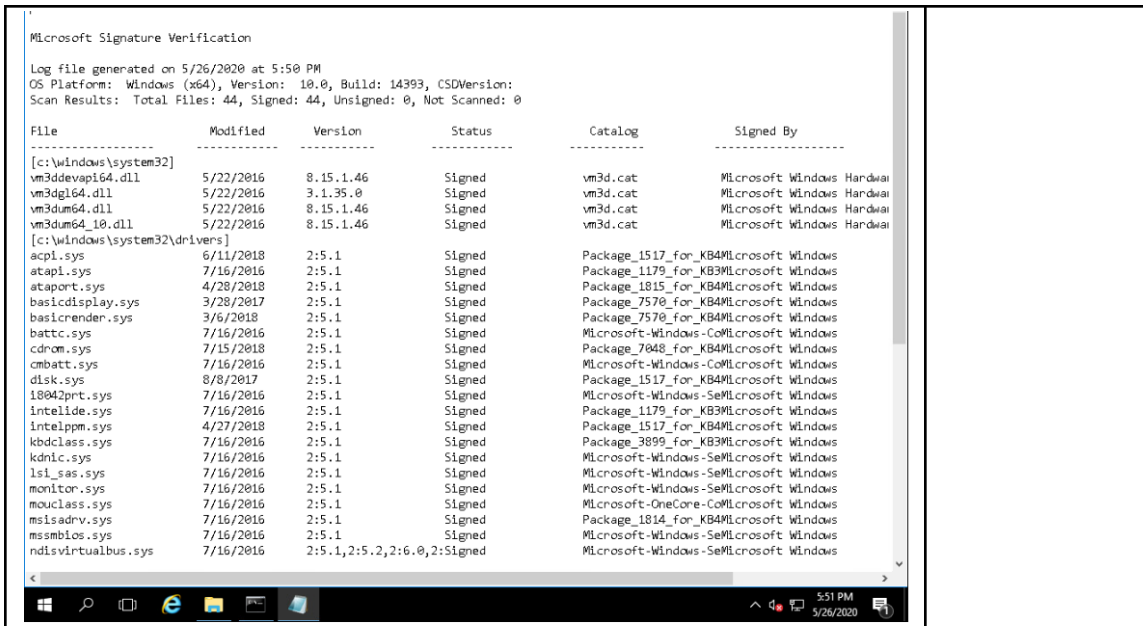
C:\Users\Administrator>

```

#	Page	Chapter/Activity	Status	Description
1	9	118 3-5		Verifying Critical Files for a Signature

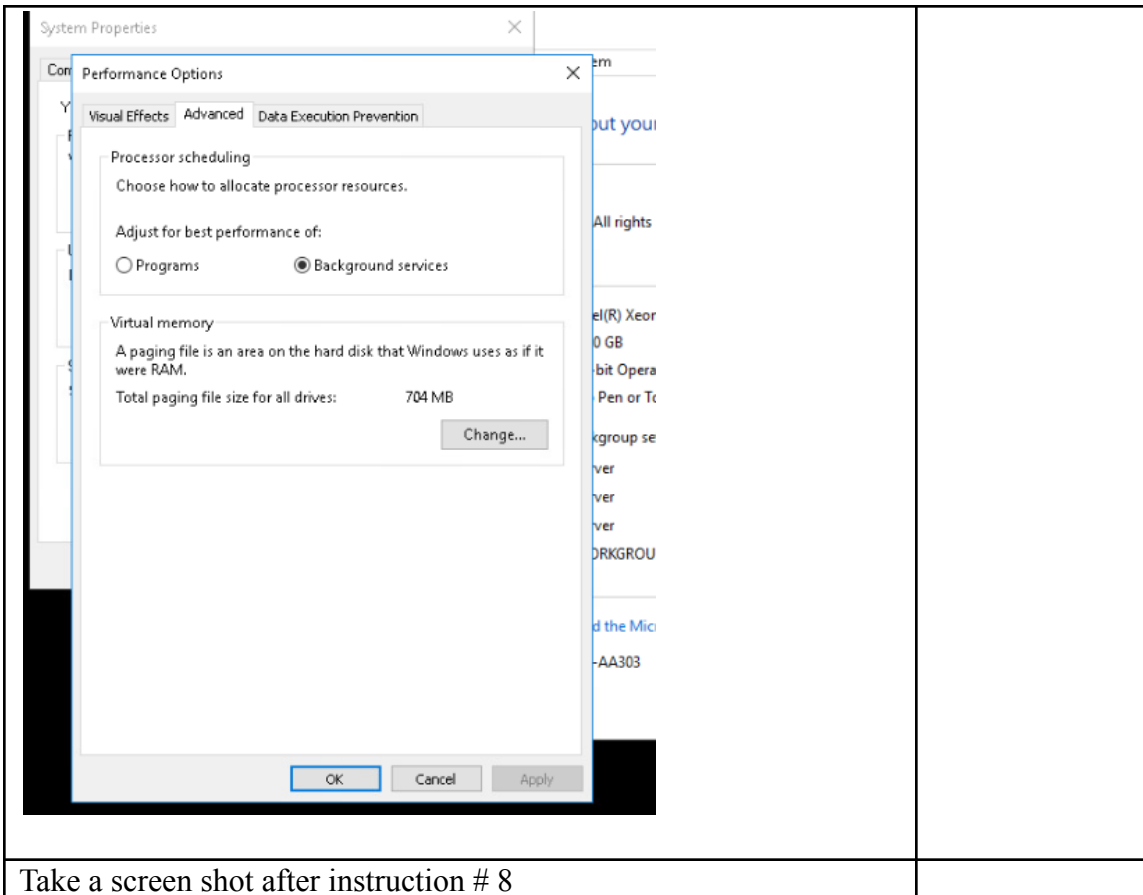
Screen Shot(s)	Documentation
<p>Take a screen shot during instruction 6 before you select o.sig</p> 	
<p>Take a screen shot after instruction # 7</p>	

Lead

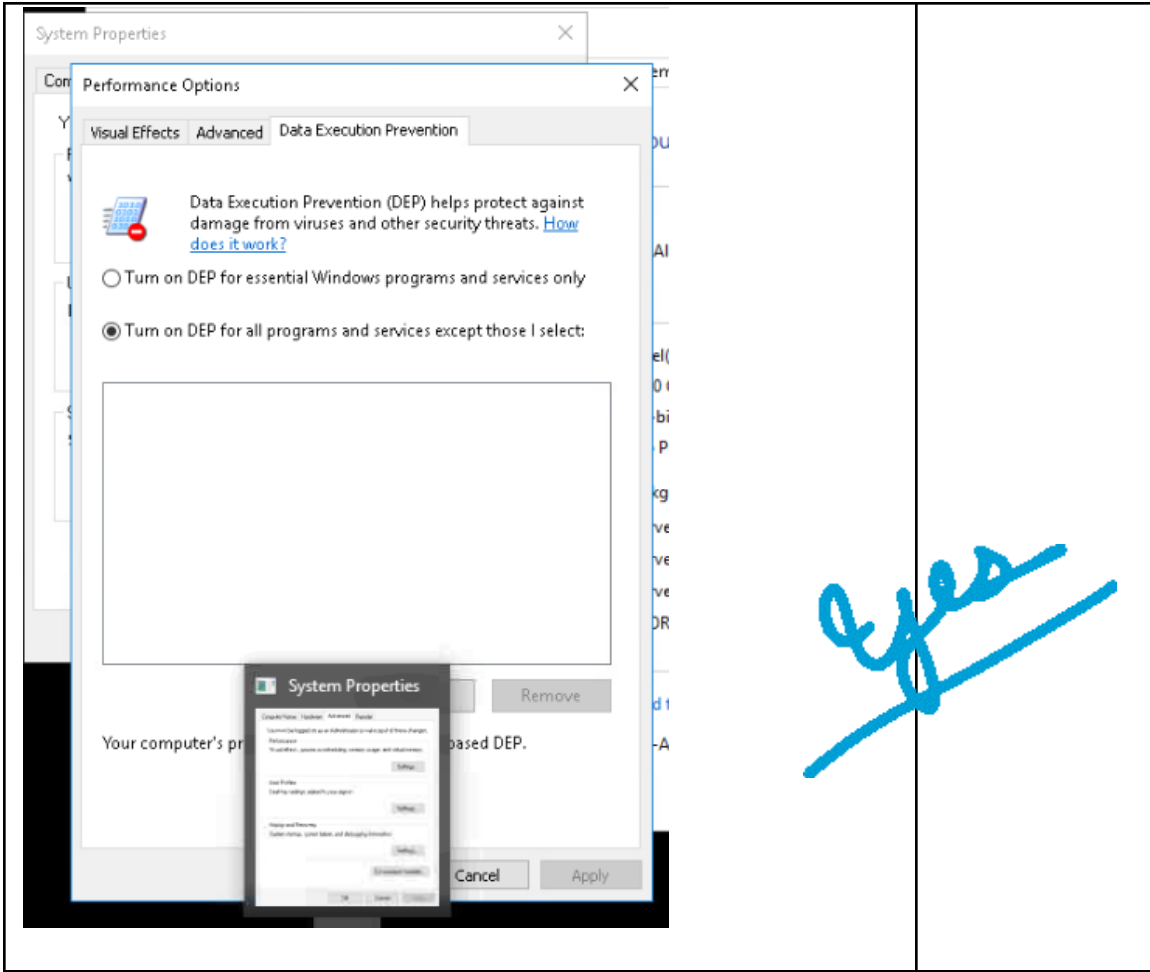


#	Page	Chapter/Activity	Status	Description
2	120	3-6		Configuring Processor Scheduling and DEP

Screen Shot(s)	Documentation
<p>Take a screen shot after instruction # 2</p>	
<p>Take a screen shot after instruction # 7</p>	

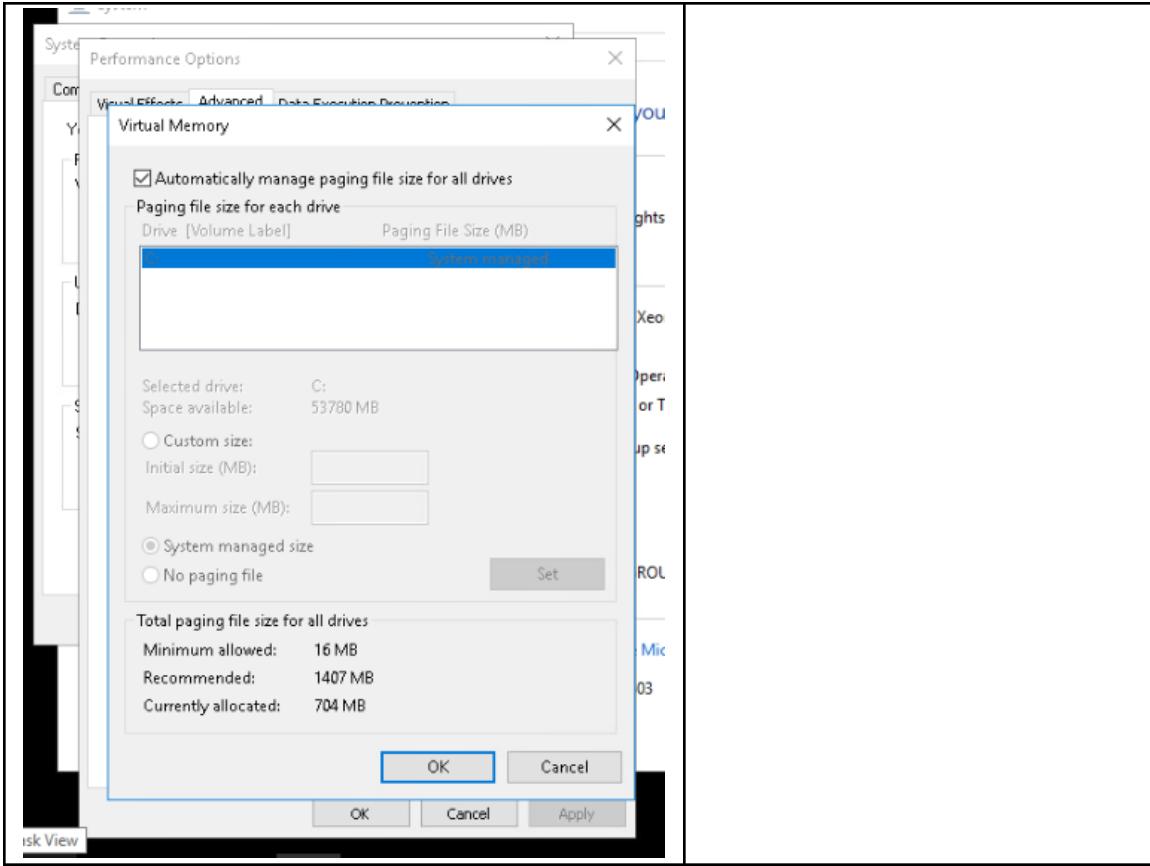


Take a screen shot after instruction # 8



#	Page	Chapter/Activity	Status	Description
2				
1	123	3-7		Configuring the Paging File

Screen Shot(s)	Documentation
Take a screen shot after instruction # 6	Your screen shot replaces the need to record the information.

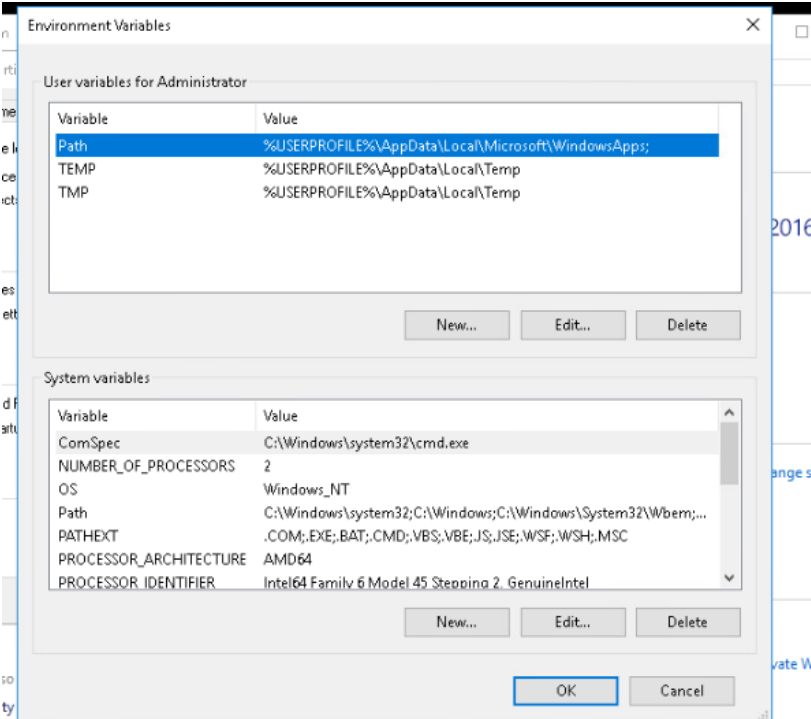


#	Page	Chapter/Activity	Status	Description
2	125	3-8		Configuring File Caching

Write Caching Will NOT Be Available with Our Virtual System

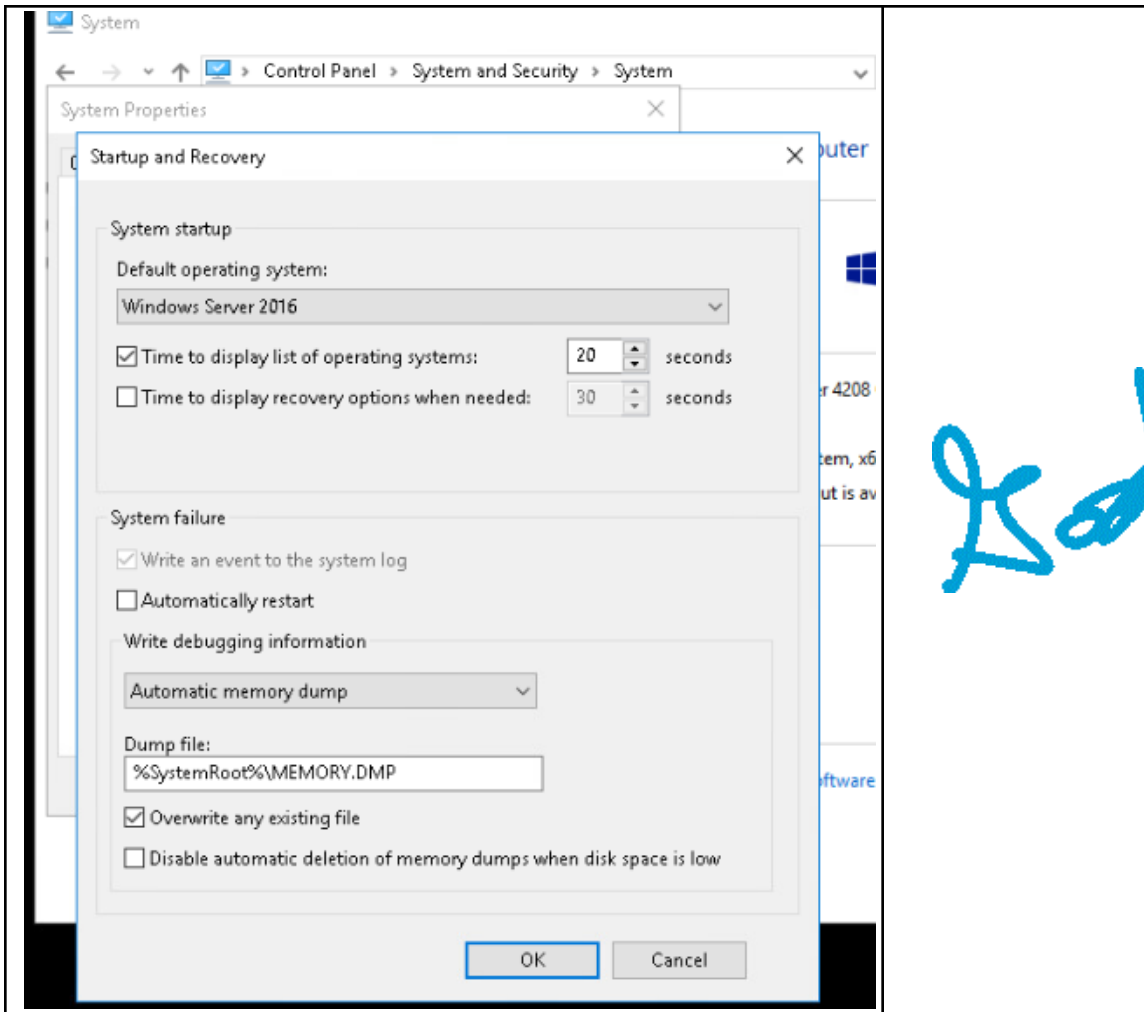
Screen Shot(s)	Documentation
<p>Take a screen shot after instruction # 3</p>	

#	Page	Chapter/Activity	Status	Description
2				
3	126	3-9		Configuring System and Environment Variables

Screen Shot(s)	Documentation
<p>Take a screen shot after instruction # 4</p> 	<p>Your screen shot replaces the need to record the information.</p>

#	Page	Chapter/Activity	Status	Description
2				
4	127	3-10		Configuring Startup and Recovery

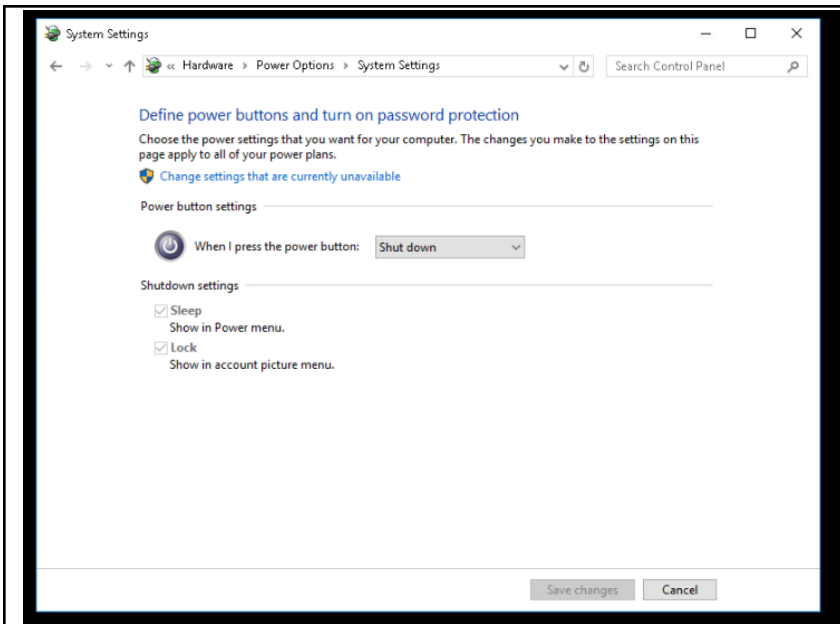
Screen Shot(s)	Documentation
Take a screen shot after instruction # 6	



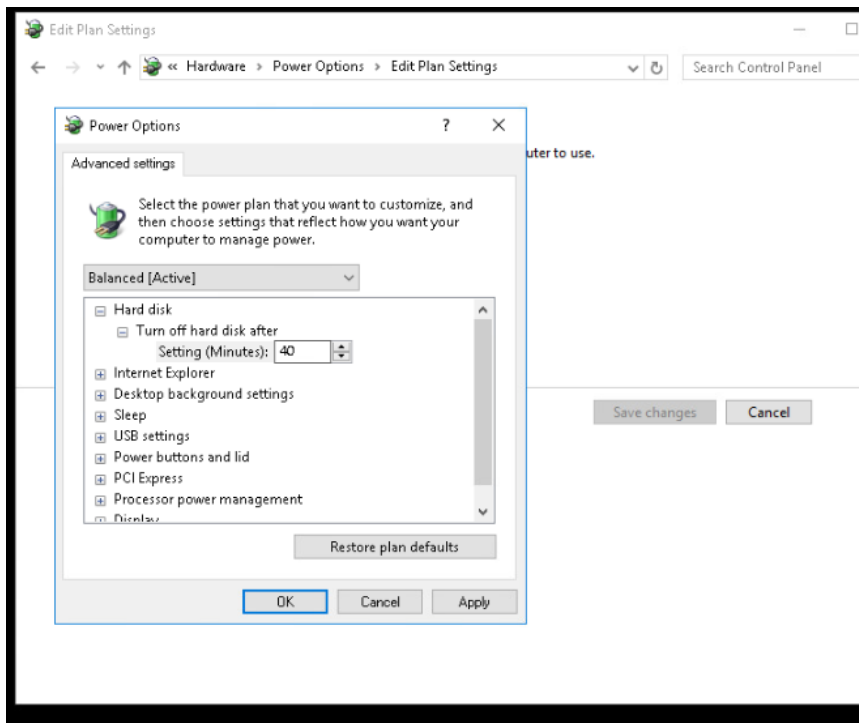
Handwritten blue scribble

#	Page	Chapter/Activity	Status	Description
2				
5	128	3-11		Configuring Power Options

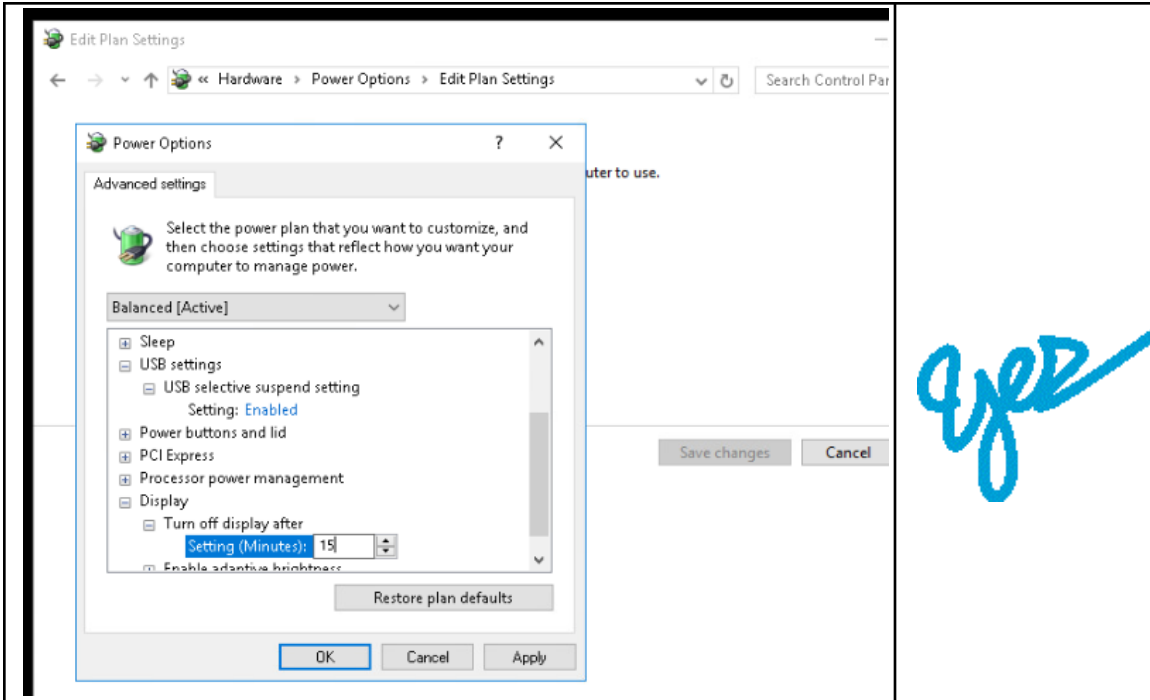
Screen Shot(s)	Documentation
Take a screen shot after instruction # 4	



Take a screen shot after instruction # 9



Take a screen shot after instruction # 13



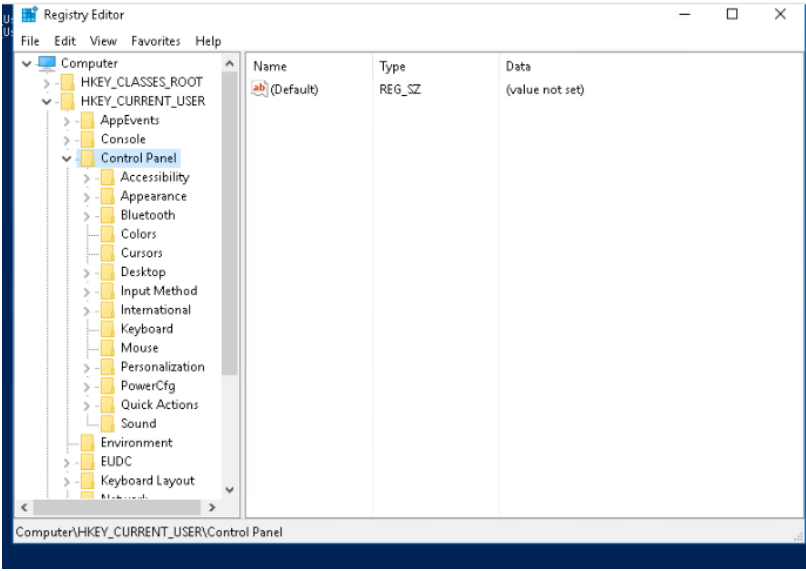
#	Page	Chapter/Activity	Status	Description
2				
6	131	3-12		Installing a Protocol

Screen Shot(s)	Documentation
<p>Take a screen shot after instruction # 7</p>	

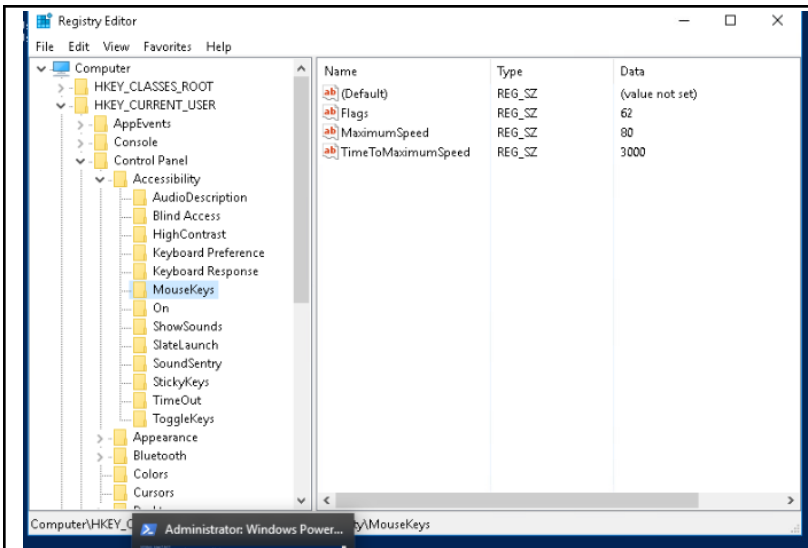
#	Page	Chapter/Activity	Status	Description
2				
7	136	3-13		Using the Registry Editor

Begin at Instruction 3. Be very careful to not make any changes once in the registry editor. The backup command described in steps 1 and 2 does not work on our version of Server 2016.

Pay very close attention to the Caution at the bottom of page 136.

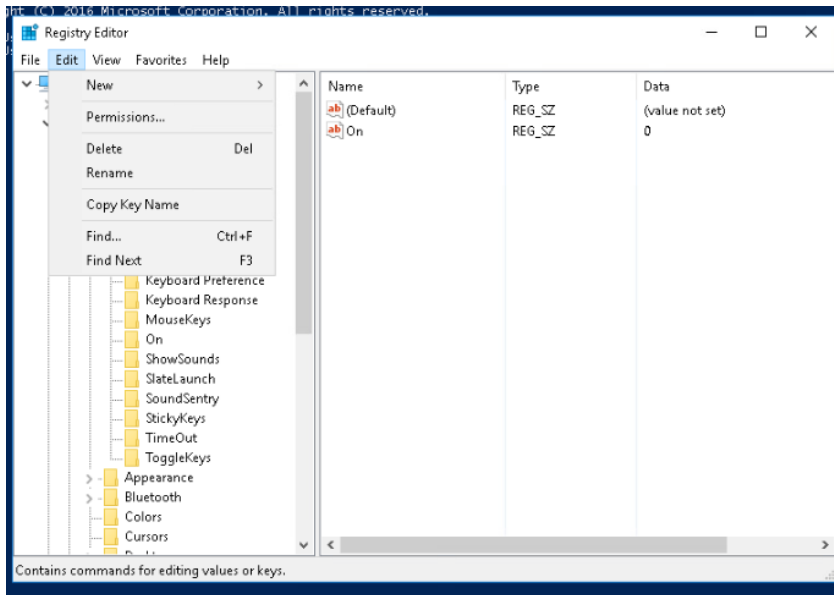
Screen Shot(s)	Documentation
<p>Take a screen shot after instruction # 4</p> 	<p>Control Panel sub keys are:</p> <ul style="list-style-type: none"> Accessibility Appearance Bluetooth Colors Cursors Desktop Input method International Keyboard Mouse Personalization powerCfg Quick actions Sound <p>5. subkeys under accessibility are:</p> <ul style="list-style-type: none"> Audio descript Blind access Highcontrast Keyboard preferences Keyboard response Mousekeys On Showsounds Slatelaunch Soundsentry Stickykeys Timeout Toggle keys
<p>Take a screen shot after instruction # 6</p>	<p>Values I see in the right pane are:</p>

*Trust
you*



Default
Flags
maximumSpeed
TimeToMaximum
Speed

Take a screen shot after instruction # 8



#	Page	Chapter/Activity	Status	Description
2				
8	137	3-14		Using Windows PowerShell

**Do some Internet research on Powershell vs Powershell ISE
Try some of the dir\ activities with Powershell and other activities with ISE.
Describe your findings BRIEFLY in documentation. Show at least 3 commands.**

Screen Shot(s)	Documentation

Administrator: Windows PowerShell

```

199 13 4056 18544 0.09 3236 1 ApplicationFrameHost
1547 64 27516 87636 16.28 2524 0 explorer
0 0 0 4 0 0 0 Idle
879 22 5976 14652 2.69 556 0 lsass
190 13 2600 9960 0.09 2504 0 msctf
417 58 132940 118668 101.27 1744 0 MsMpEng
167 26 3986 9248 0.05 2712 0 NisSrv
598 28 59384 68596 0.53 2388 1 powershell
634 44 109780 142432 3.23 3776 1 powershell_ise
387 21 9000 28364 0.25 2604 1 RuntimeBroker
1090 69 74796 128008 1.83 3220 1 SearchUI
250 10 3784 7836 1.98 548 0 services
701 30 19596 54224 1.33 3132 1 ShellExperienceHost
382 16 4136 21100 1.00 2548 1 slhst
51 2 384 1208 0.27 260 0 smss
419 22 5808 16208 0.19 1480 0 spoolsv
422 33 12744 18524 0.86 284 0 svchost
857 29 8112 20460 1.47 292 0 svchost
622 21 5884 19676 1.20 640 0 svchost
560 16 4208 10364 1.81 700 0 svchost
1382 45 21320 49868 16.25 804 0 svchost
771 30 11848 22404 0.93 872 0 svchost
519 10 1948 7256 0.08 1032 0 svchost
805 41 12232 27552 0.67 1040 0 svchost
287 18 4220 19764 0.16 1384 1 svchost
951 1218 19860 27216 1.31 1520 0 svchost
527 21 7792 22772 0.81 1548 0 svchost
226 13 2664 10996 0.22 1636 0 svchost
231 21 5888 17164 0.73 1664 0 svchost
787 0 128 136 34.22 4 0 System
303 26 5096 17012 0.43 2892 1 taskhostw
134 12 5396 12524 0.05 1712 0 VGAuthService
347 24 9088 21824 6.03 1720 0 vmtoolsd
215 18 3844 14448 5.77 3960 1 vmtoolsd
107 9 1076 5588 0.05 420 0 wininit
183 9 1764 9108 0.08 480 1 winlogon
338 17 12476 23104 9.22 2292 0 winPrvSE
  
```

PS C:\Users\Administrator>

Administrator: Windows PowerShell ISE

```

167 26 3986 9248 0.05 2712 0 NisSrv
661 28 59468 69292 0.63 2388 1 powershell
935 47 115264 146956 4.17 3776 1 powershell_ise
387 21 9400 28364 0.25 2604 1 RuntimeBrok
1090 69 74796 128008 1.83 3220 1 SearchUI
250 10 3784 7836 1.98 548 0 services
701 30 19596 54224 1.33 3132 1 ShellExper
382 16 4136 21100 1.00 2548 1 slhst
51 2 384 1208 0.27 260 0 smss
419 22 5808 16208 0.19 1480 0 spoolsv
422 33 12744 18524 0.86 284 0 svchost
857 29 8112 20460 1.47 292 0 svchost
622 21 5884 19676 1.20 640 0 svchost
560 16 4208 10364 1.81 700 0 svchost
1382 45 21320 49868 16.25 804 0 svchost
771 30 11848 22404 0.93 872 0 svchost
519 10 1948 7256 0.08 1032 0 svchost
805 41 12232 27552 0.67 1040 0 svchost
287 18 4220 19764 0.16 1384 1 svchost
951 1218 19860 27216 1.31 1520 0 svchost
527 21 7792 22772 0.81 1548 0 svchost
226 13 2664 10996 0.22 1636 0 svchost
231 21 5888 17164 0.73 1664 0 svchost
787 0 128 136 34.22 4 0 System
303 26 5096 17012 0.43 2892 1 taskhostw
134 12 5396 12524 0.05 1712 0 VGAuthService
347 24 9088 21824 6.03 1720 0 vmtoolsd
215 18 3844 14448 5.77 3960 1 vmtoolsd
107 9 1076 5588 0.05 420 0 wininit
183 9 1764 9108 0.08 480 1 winlogon
338 17 12476 23104 9.22 2292 0 winPrvSE
  
```

PS C:\Users\Administrator>

Completed

Administrator: Windows PowerShell

```

88 7 1220 6168 0.02 2668 1 dllhost
334 35 26048 47896 5.97 816 1 dmw
1547 64 27516 87636 16.28 2524 0 explorer
0 0 0 4 0 0 0 Idle
879 22 5976 14652 2.69 556 0 lsass
190 13 2600 9960 0.09 2504 0 msctf
417 58 132940 118668 101.27 1744 0 MsMpEng
167 26 3986 9248 0.05 2712 0 NisSrv
598 28 59384 68596 0.53 2388 1 powershell
634 44 109780 142432 3.23 3776 1 powershell_ise
387 21 9000 28364 0.25 2604 1 RuntimeBroker
1090 69 74796 128008 1.83 3220 1 SearchUI
250 10 3784 7836 1.98 548 0 services
701 30 19596 54224 1.33 3132 1 ShellExperienceHost
382 16 4136 21100 1.00 2548 1 slhst
51 2 384 1208 0.27 260 0 smss
419 22 5808 16208 0.19 1480 0 spoolsv
422 33 12744 18524 0.86 284 0 svchost
857 29 8112 20460 1.47 292 0 svchost
622 21 5884 19676 1.20 640 0 svchost
560 16 4208 10364 1.81 700 0 svchost
1382 45 21320 49868 16.23 804 0 svchost
771 30 11848 22404 0.93 872 0 svchost
519 10 1948 7256 0.08 1032 0 svchost
805 41 12232 27552 0.67 1040 0 svchost
287 18 4220 19764 0.16 1384 1 svchost
951 1218 19860 27216 1.31 1520 0 svchost
527 21 7792 22772 0.81 1548 0 svchost
226 13 2664 10996 0.22 1636 0 svchost
231 21 5888 17164 0.73 1664 0 svchost
787 0 128 136 34.20 4 0 System
303 26 5096 17012 0.43 2892 1 taskhostw
134 12 5396 12524 0.05 1712 0 VGAuthService
347 24 9088 21824 6.03 1720 0 vmtoolsd
215 18 3844 14448 5.77 3960 1 vmtoolsd
107 9 1076 5588 0.05 420 0 wininit
183 9 1764 9108 0.08 480 1 winlogon
338 17 12476 23104 9.22 2292 0 winPrvSE
  
```

PS C:\Users\Administrator> get-help join-path

```

NAME
    Join-Path

SYNTAX
    Join-Path [-Path] <string> [-ChildPath] <string> [-Resolve] [-Credentia
    l] [-UseTransaction] [-CommonParameters]

ALIASES
    None

REMARKS
    Get-Help cannot find the Help files for this cmdlet on this computer.
    To download and install Help files for the module that includes this
    cmdlet, use Update-Help.
    To view the Help topic for this cmdlet online, type: "Get-Help <cmdlet>
    -Online" or
    go to http://go.microsoft.com/fwlink/?LinkID=11347.
  
```

PS C:\Users\Administrator>

Completed

```

Administrator: Windows PowerShell

NAME
Join-Path

SYNTAX
Join-Path [-Path] <string[]> [-ChildPath] <string> [-Resolve] [<CommonParameters>]

ALIASES
None

REMARKS
get-Help cannot find the Help files for this cmdlet on this computer.
-- To download and install Help files for the module that is missing, use the Update-Help cmdlet.
-- To view the Help topic for this cmdlet online, type: "get-Help <cmdlet> -Online" or go to http://go.microsoft.com/fwlink/?LinkID=113347.

PS C:\Users\Administrator> Get-availabilityGroupStatus
get-availabilityGroupStatus : The term 'get-availabilityGroupStatus' is not recognized as the name of a cmdlet,
function, script file, or operable program. Check the spelling of the name, or that the path is correct and try again.
At line:1 char:1
+ Get-availabilityGroupStatus
~
    + CategoryInfo          : ObjectNotFound; (Get-availabilityGroupStatus:CommandNotFoundExce...
    + FullyQualifiedErrorId : CommandNotFoundException

PS C:\Users\Administrator> Get-AvailabilityGroupStatus
Get-AvailabilityGroupStatus : The term 'Get-AvailabilityGroupStatus' is not recognized as the name of a cmdlet,
function, script file, or operable program. Check the spelling of the name, or that the path is correct and try again.
At line:1 char:1
+ Get-AvailabilityGroupStatus
~
    + CategoryInfo          : ObjectNotFound; (Get-AvailabilityGroupStatus:CommandNotFoundExce...
    + FullyQualifiedErrorId : CommandNotFoundException

PS C:\Users\Administrator> Get-RDAvailableApp
cmdlet Get-RDAvailableApp at command pipeline position 1
Supply values for the following parameters:
CollectionName: _

```

```

Administrator: Windows PowerShell ISE

File Edit View Tools Debug Add-ons Help

PS C:\Users\Administrator> get-help join-pa
NAME
Join-Path

SYNTAX
Join-Path [-Path] <string[]> [-ChildPat
<pscredential>] [-UseTransaction] [<C

ALIASES
None

REMARKS
get-Help cannot find the Help files for
displaying only partial help.
-- To download and install Help fil
cmdlet, use Update-Help.
-- To view the Help topic for this
-Online" or
go to http://go.microsoft.com/f

PS C:\Users\Administrator> Get-RDAvailabl
cmdlet Get-RDAvailableApp at command pipel
Supply values for the following parameters:
CollectionName:

Running script / selection. Press Ctrl+Break to stop. Press

```

Awesome